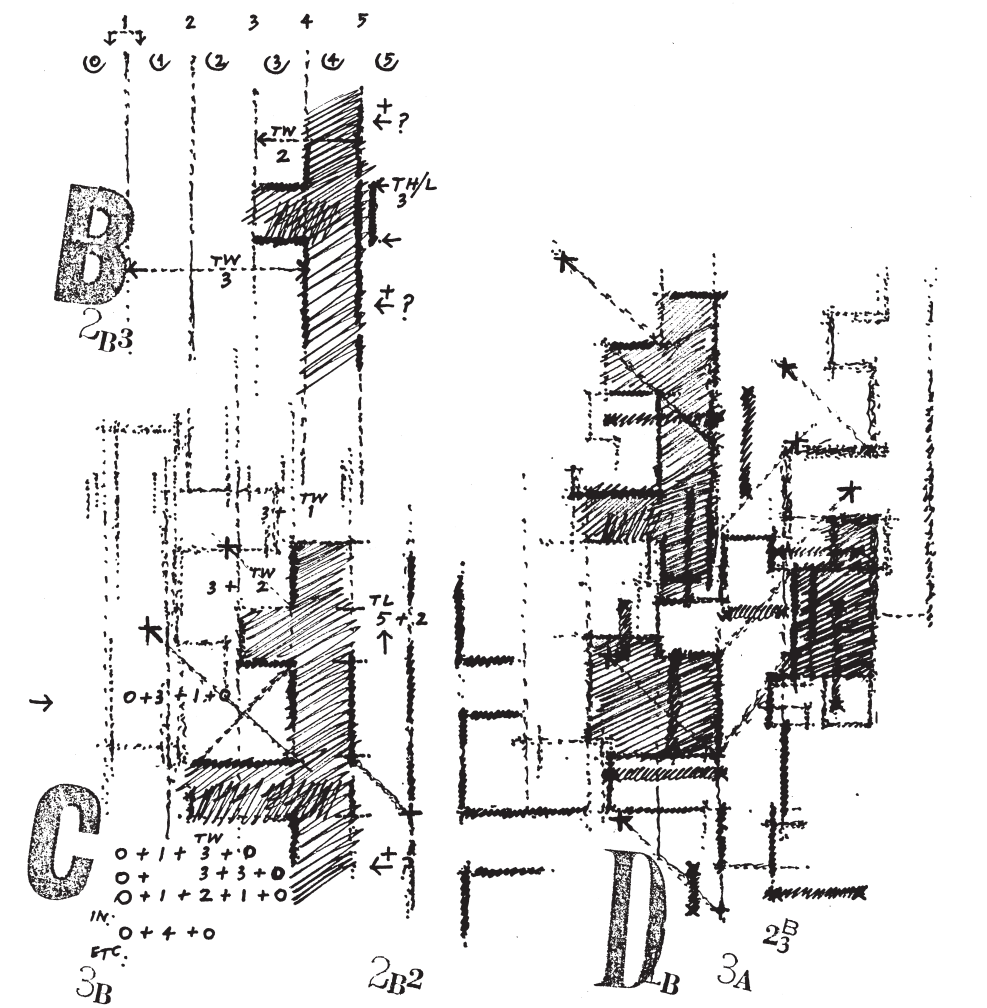
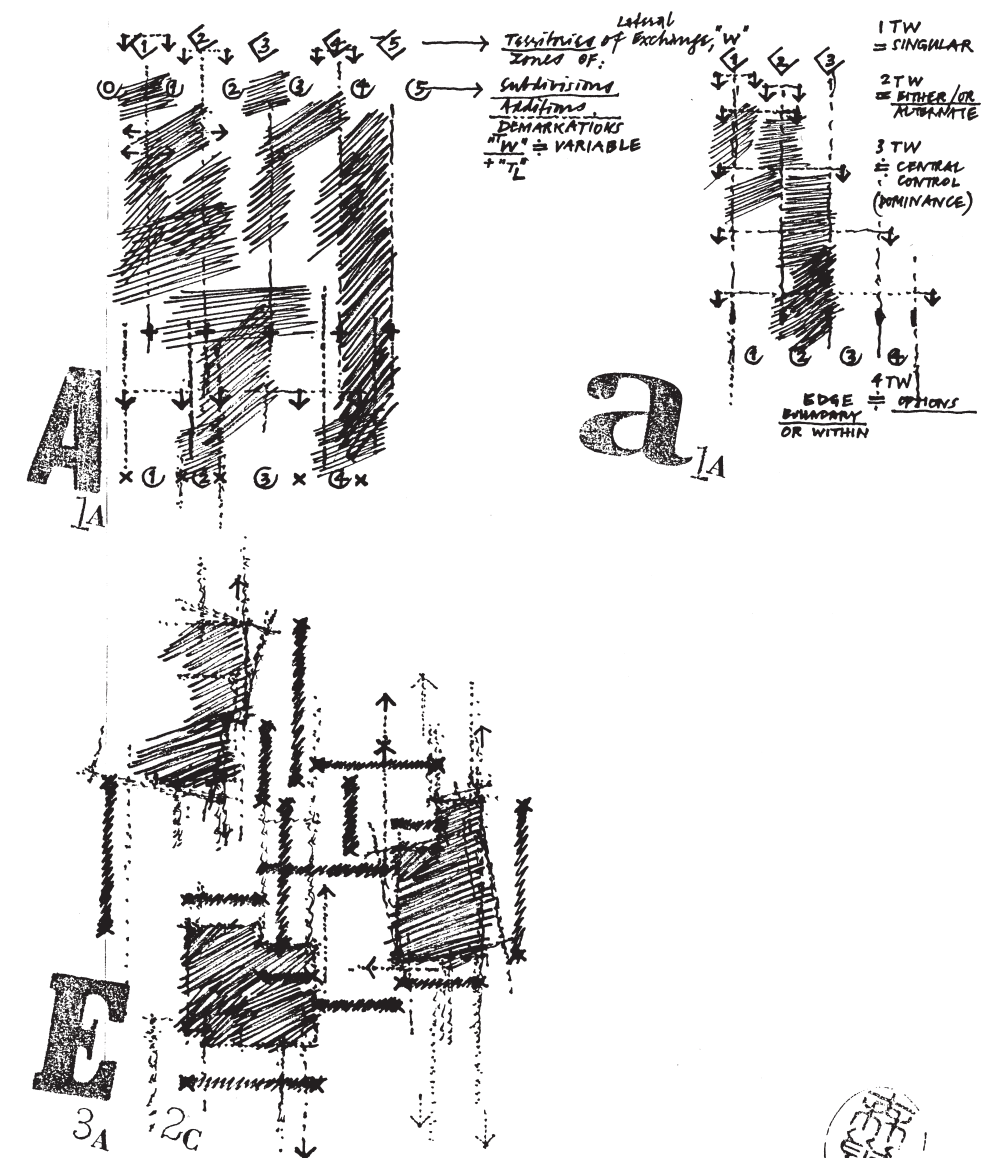
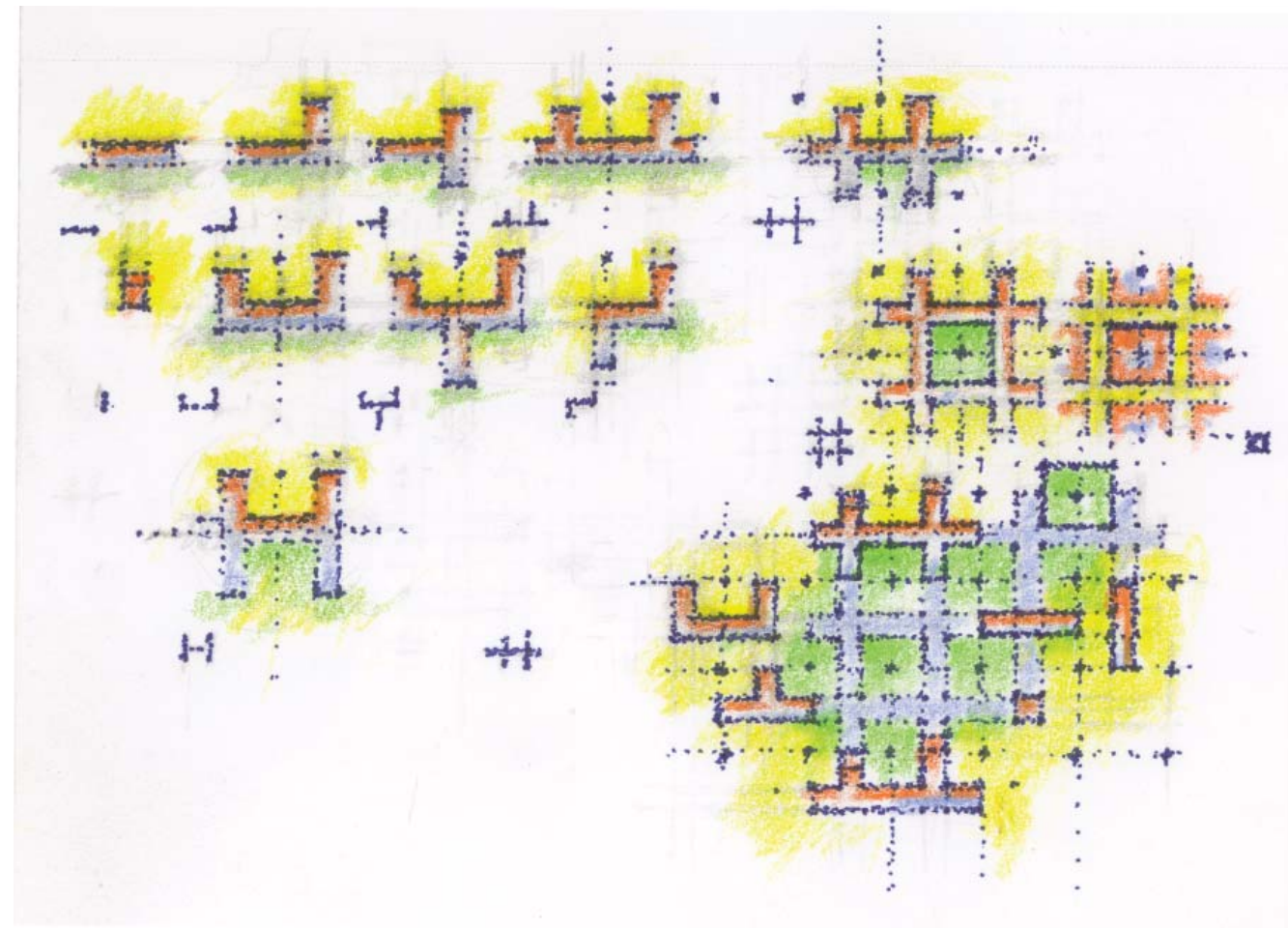
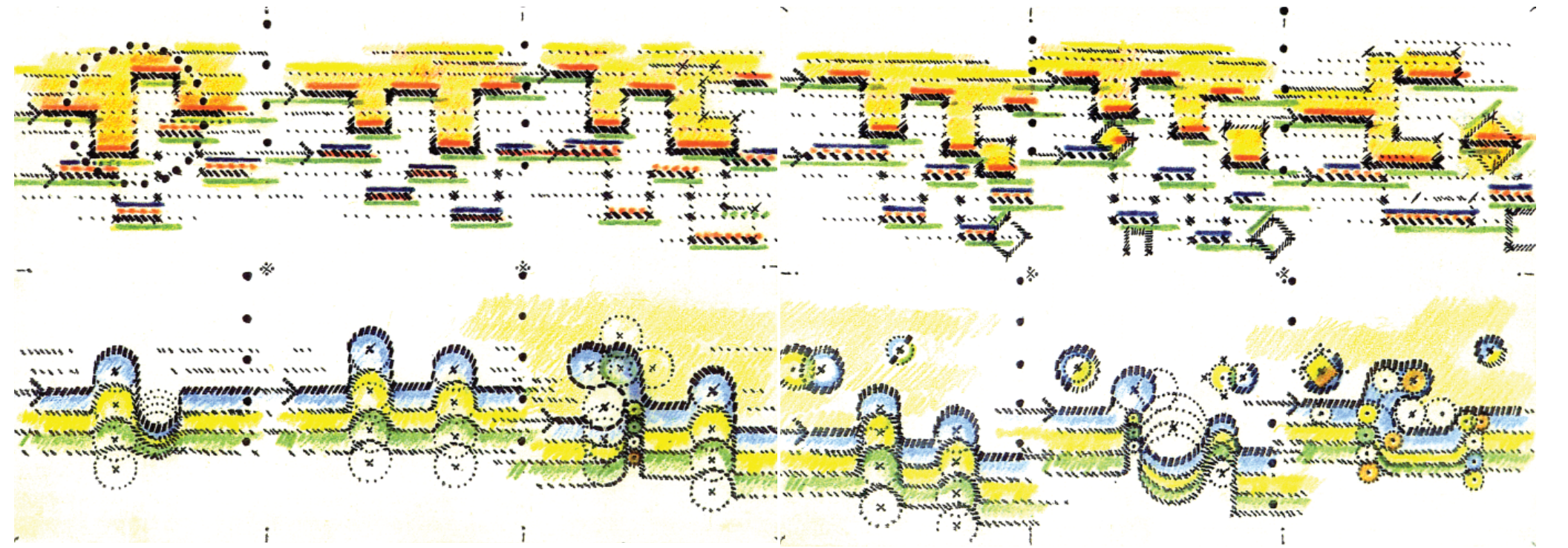
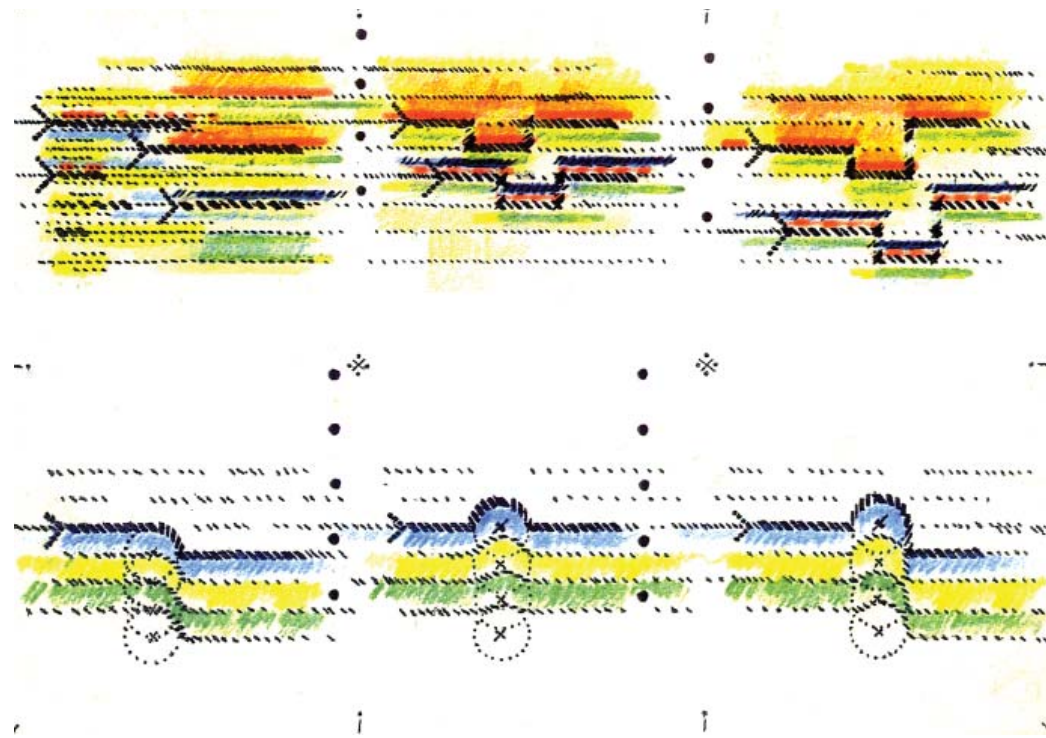


Directional field:

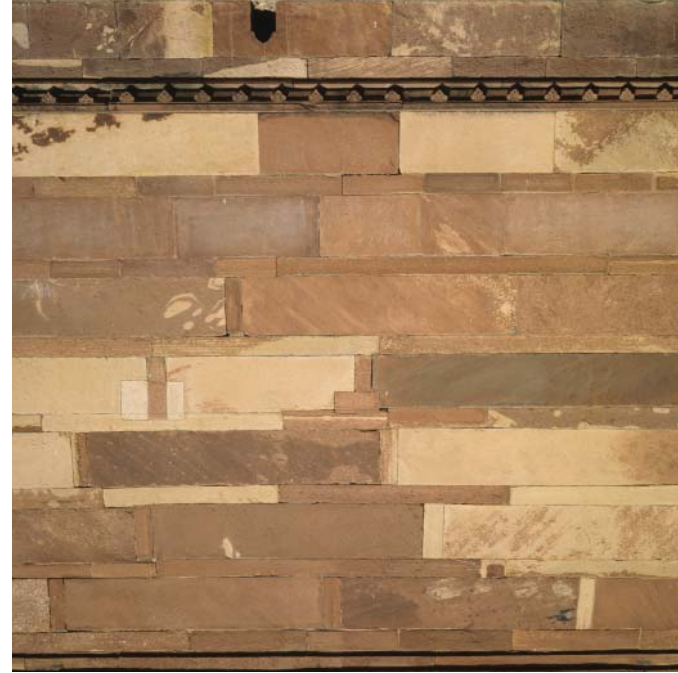
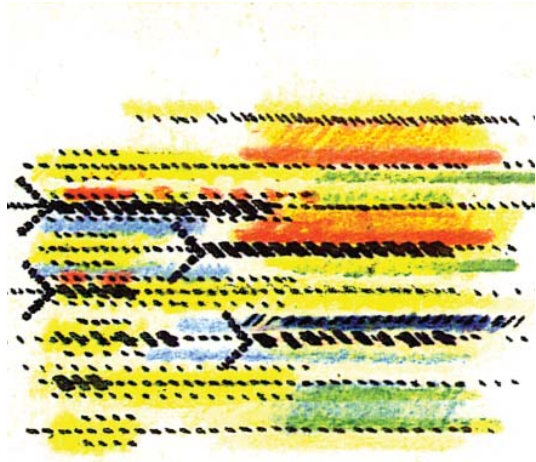
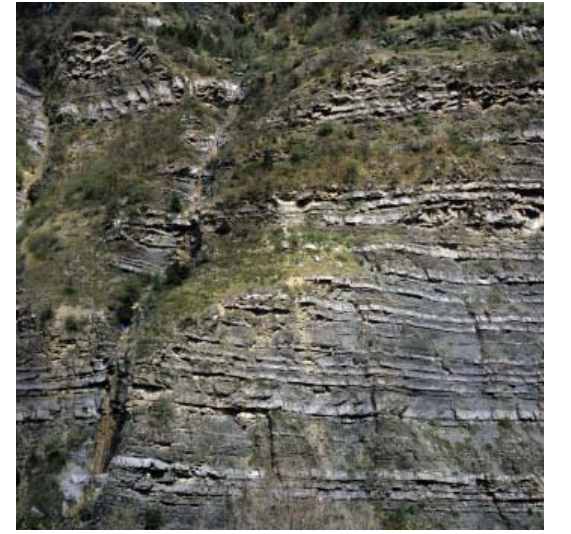
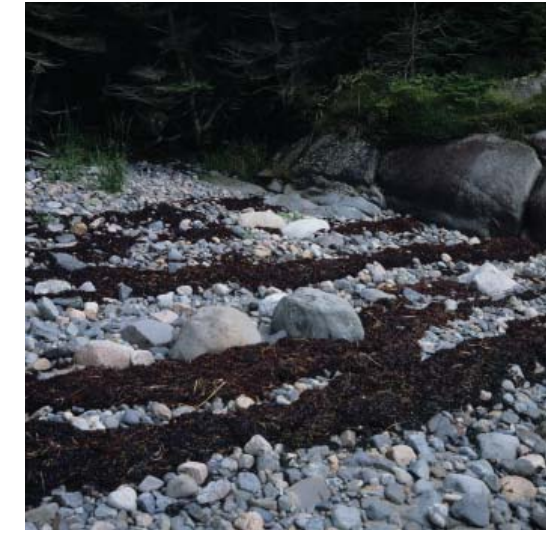
Cartesian directional fields: the controlling system/skeleton/schema is a set of more or less parallel lines; the orthogonal is always present, but its continuity varies to define two major types of organization: "Directional field" indicates a field in which one direction predominates, and "multi-directional" indicates a field in which a direction and its orthogonal have roughly equal importance. The organizing lines of a directional field might be gently curved and/or slightly out of parallel; we're describing general behaviors that can encompass some variation before they become something entirely different. (And, of course, there is a continuum between one system and another.) We argue for "directional" (which recognizes/intensifies differences) and against "multi-directional" (which, at least when taken toward extremes of uniformity, ignores/cancels differences).



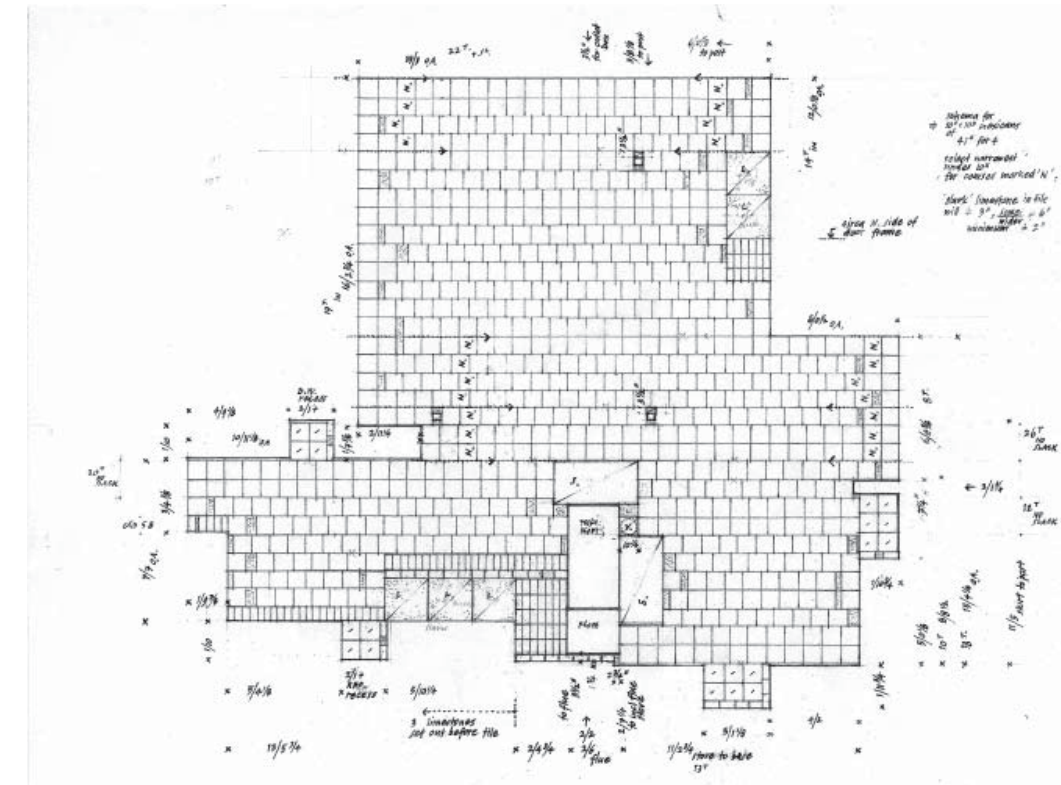
APR 20 1984  
 MARGARET SMITH

APR 20 1984  
 MARGARET SMITH

J. S. BACH.

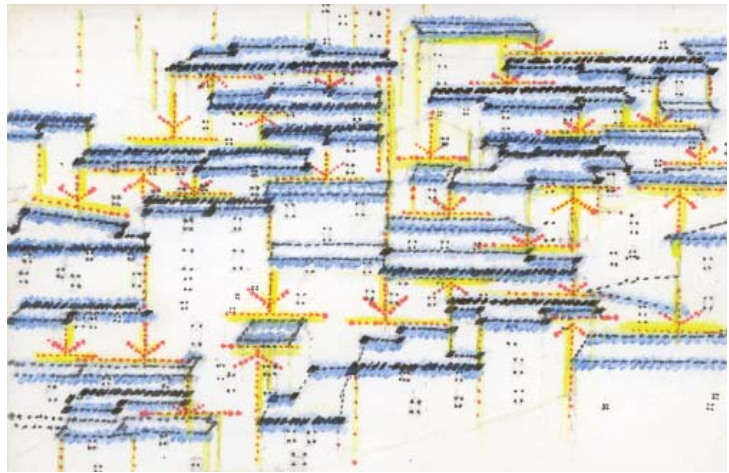


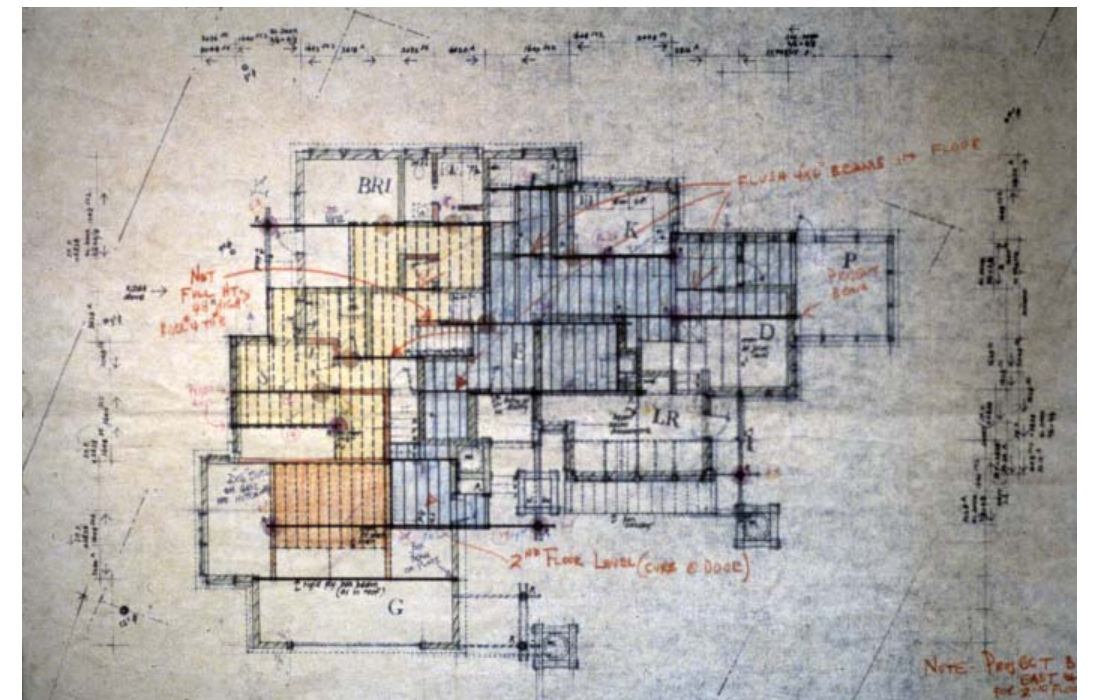
- 2: apple orchard, Harvard, MA
- 3: rail yard, Chicago, IL
- 4: tilled field, France
- 5: Devil's Tower, WY
- 6: Roque Bluffs, ME
- 7: Harvard, MA
- 8: Gorge du Tarn, Lozère, France
- 9: barn, MA
- 10: El Cebrero, Lugo, Spain

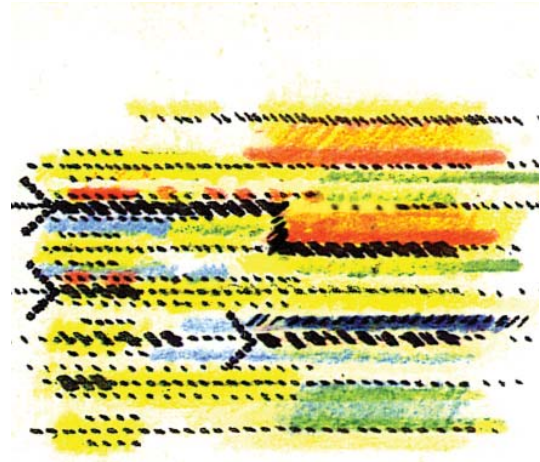










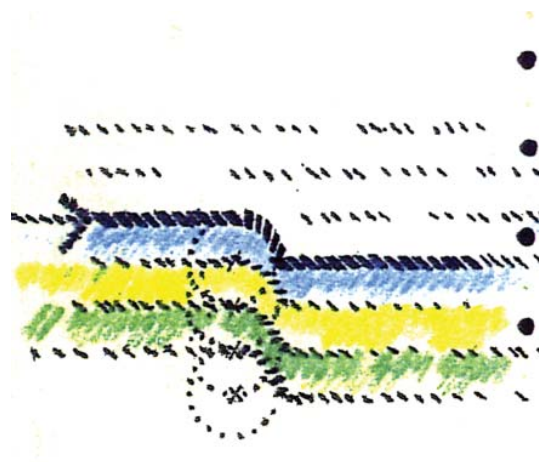


Single step



Diagram of a single step in a directional field: a lateral displacement to one side of a reference line, forming an inside corner and an outside corner.

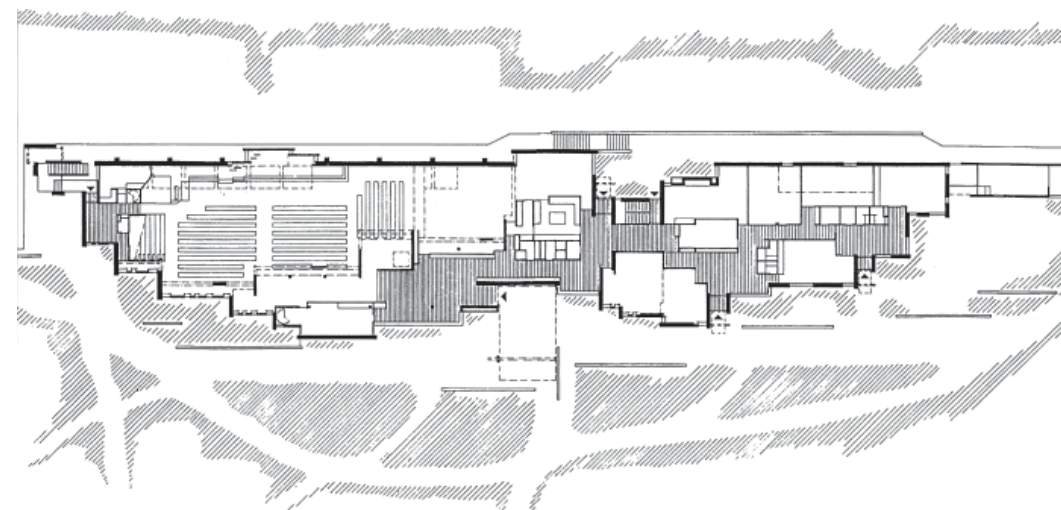
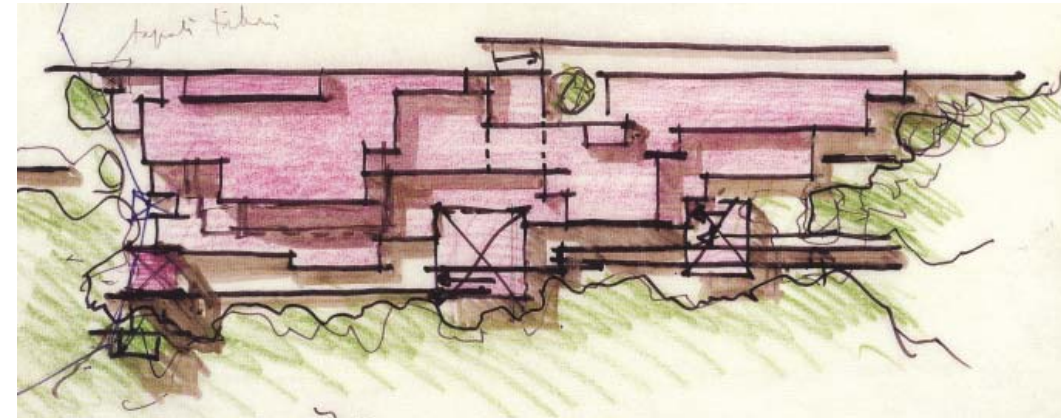
A simple step built as a glazed corner gives a centrally-located room a view toward the street.

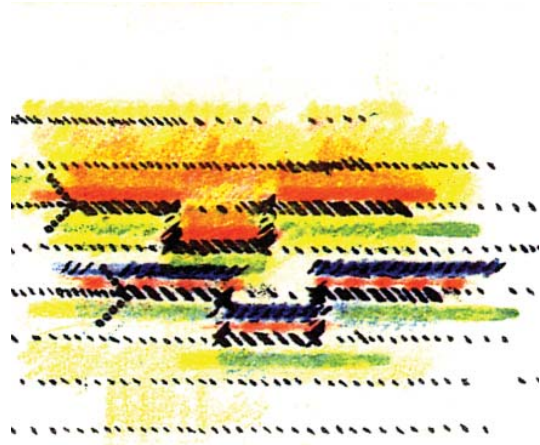




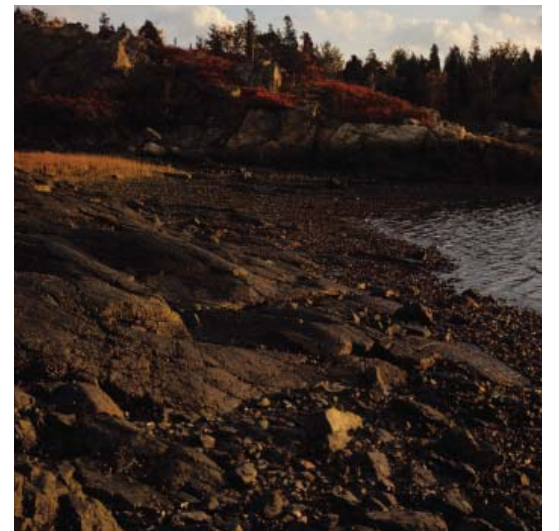
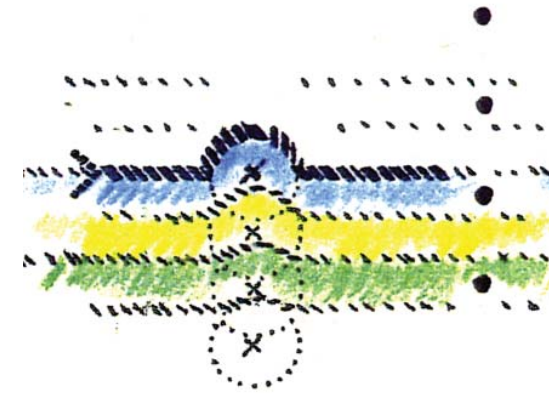
Repetitive units in true growth-form are directions, NOT the units or grids of stacked unassembled building material. If, as here, the extent of each faceted plane is optional, within agreed limits, the collective assemblage will present near-endless variety and particular differences without theatrics, cosmetics, or isolationism. Color / light, material, and use are extra variants.

--from *Space & Society* 18

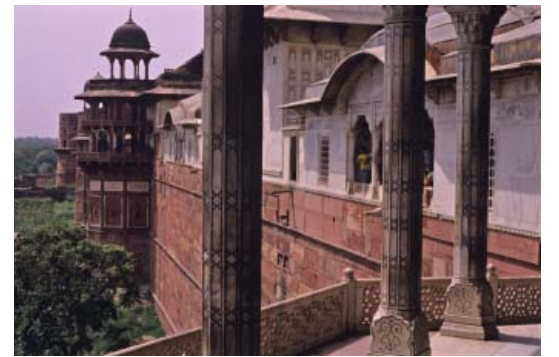


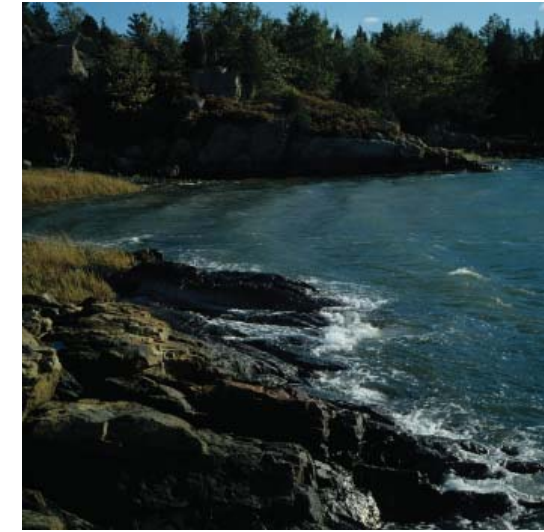


Double step / bay



Jaisalmer



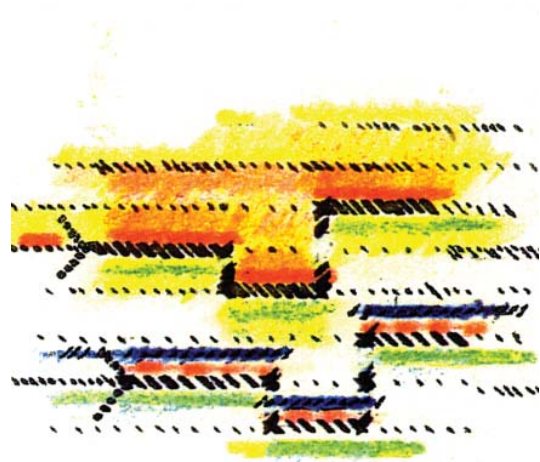


The habitable landscape is a particular continuous / unframed collage-field of formal definitions / materials / color / light . . . . The presence of each "growth-form" family is optional, additive, and self-stable, while it intensifies at varying sizes the reciprocal form of the bay-water/land reciprocity— [in] plan, low relief, shelter in outreach.

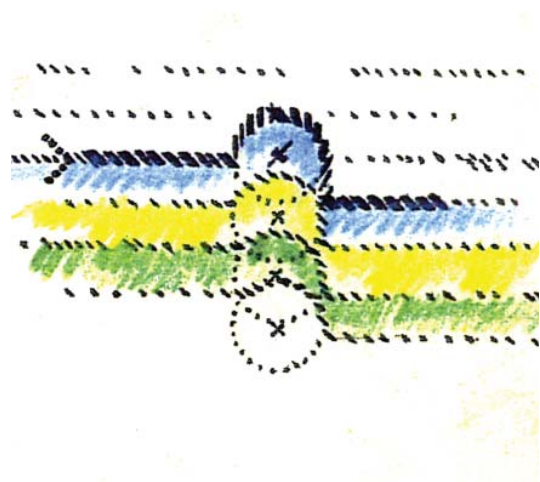
Perception of the larger landscape includes the multi-meaning "form" of the reciprocally unbuilt. (The general diagram would persist when specific built form (for example, a harbor town) reinforced / added to / redefines parts of the already usable assemblage.

--from *Space & Society* 18





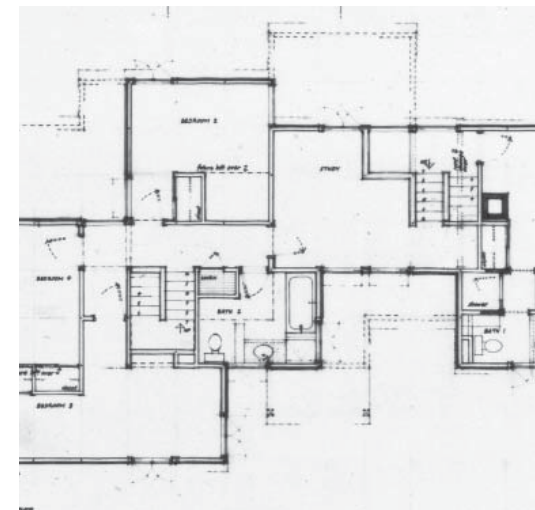
Earned step

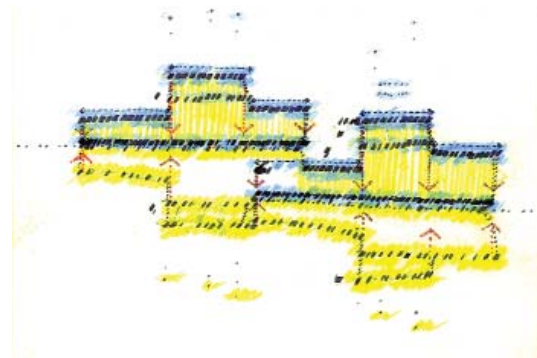
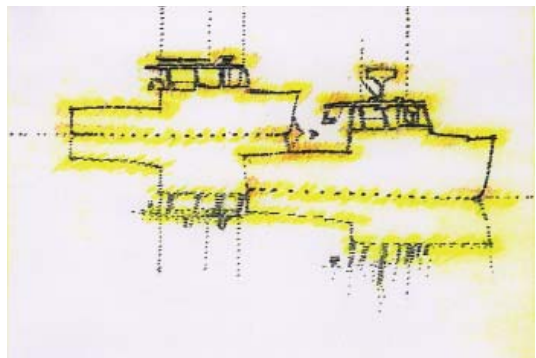


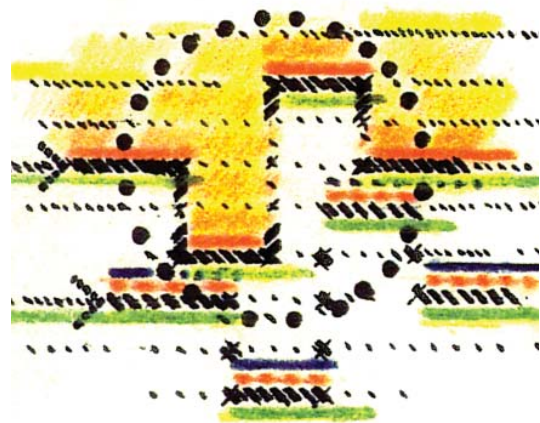
Setenil



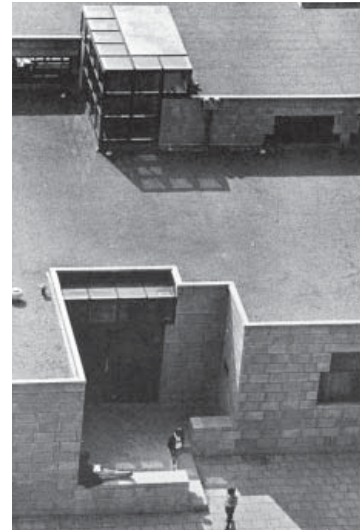
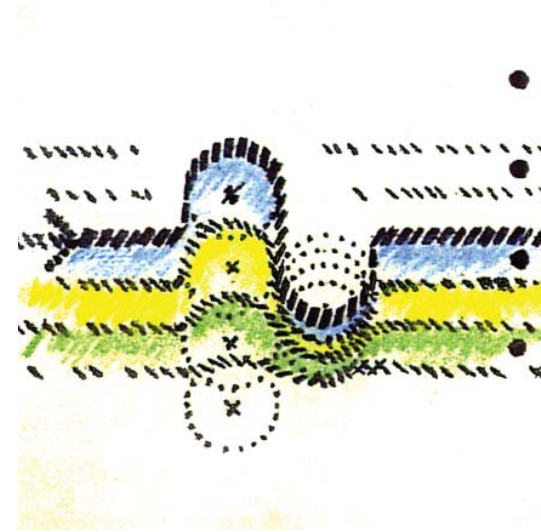
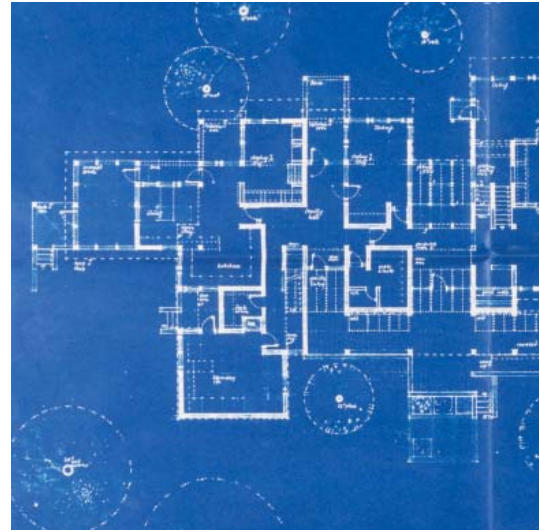
Fiscardo

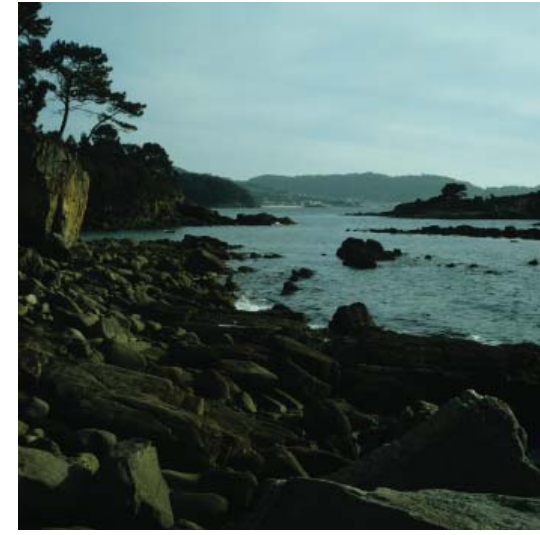


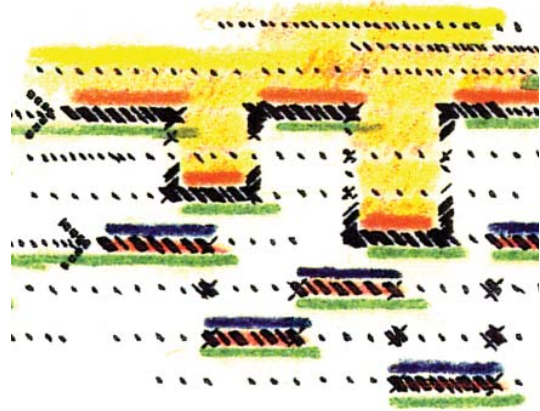




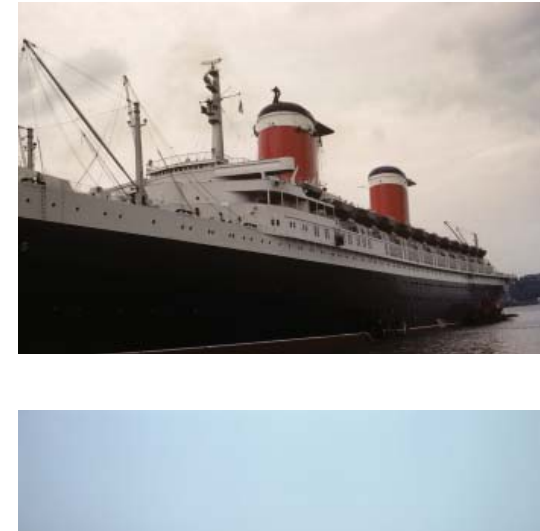
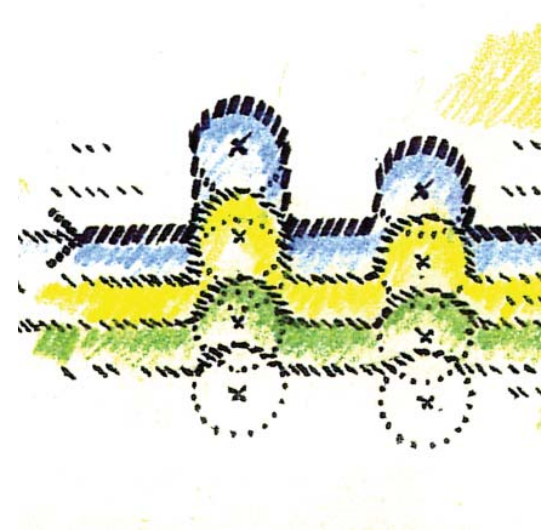
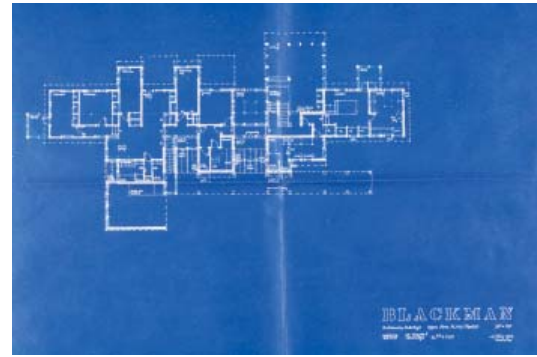
Reciprocity

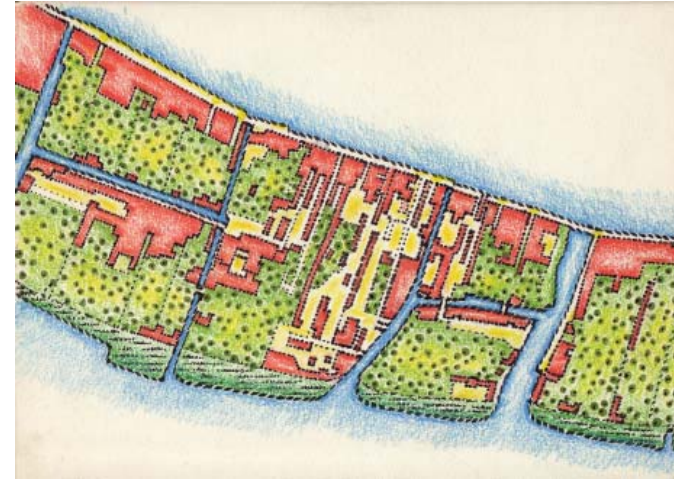
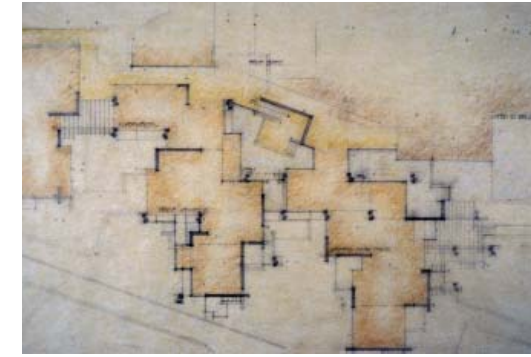






Pi





Intensification of directional field definitions is also directional. The stepped, dark form is straight-edged on one side while the opposite is varied / stepped. This principle (formal orientation) is observable, for example, in the most additive roofscapes, where if the lower (outer) roof edges are straight, the upper (inner) edges will "interlock" or exchange; in reverse, continuous ridges encourage varied eaves.

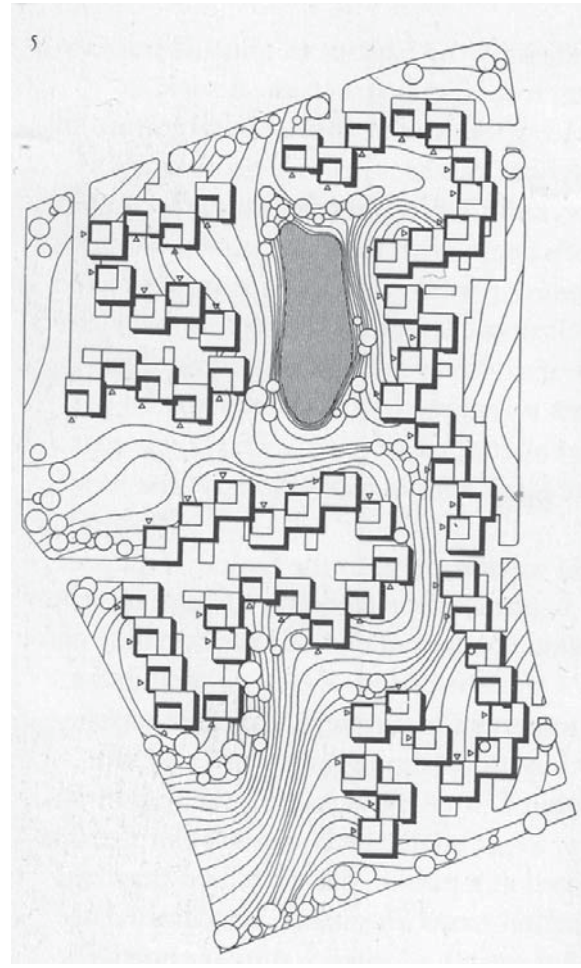
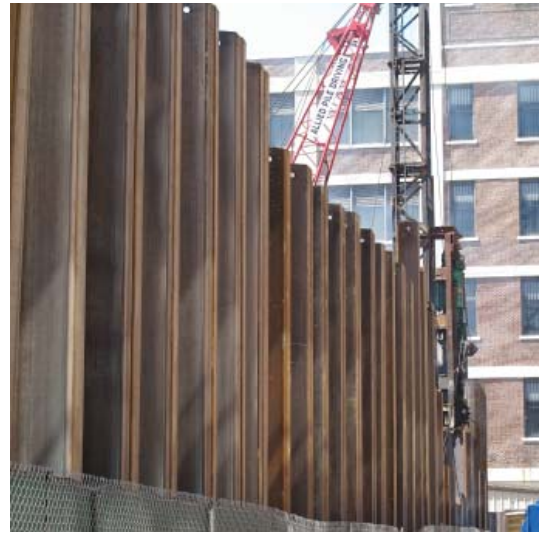
In light-screens, registration is likely to intensify / "build" the zone of one edge or corner at the expense of the other.

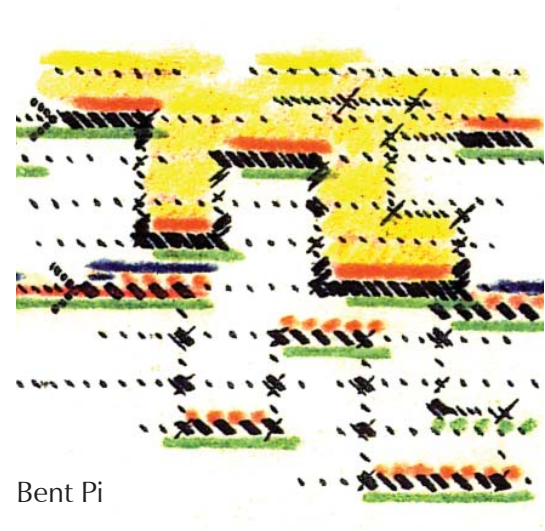
--from *Space & Society* 18

At collective size, sky/light and wall/dark diagram interlocking. At assemblage / built size, framed levels (trace of floor, sill, lintel, and, again floor) are defined in alternating continuity: that is, where the floor continues, the sill stops short (in its bays); if the sill continues, the lintel stops, and so on. In the five elevational bays, light-permutations, registered from the open (left) exchange directionally with the reversed closed right.

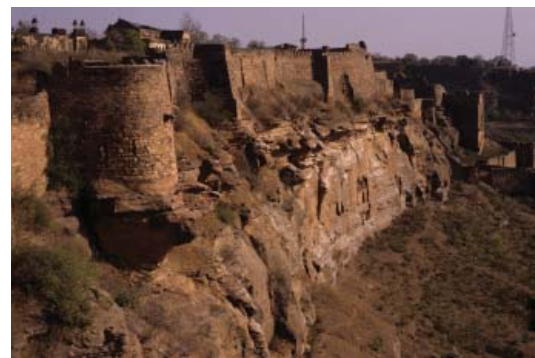
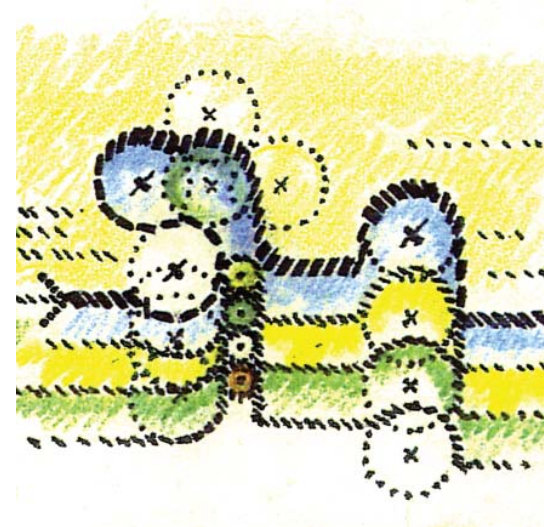
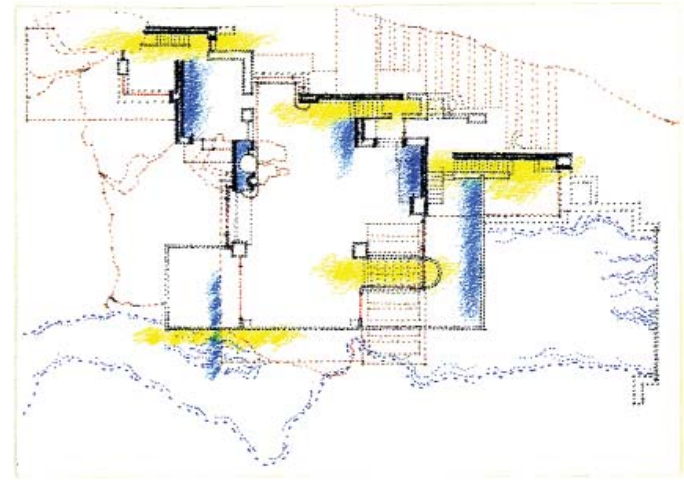
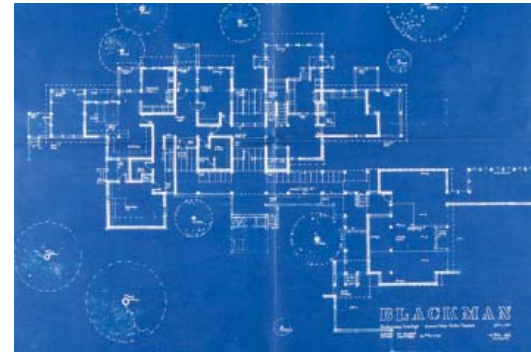
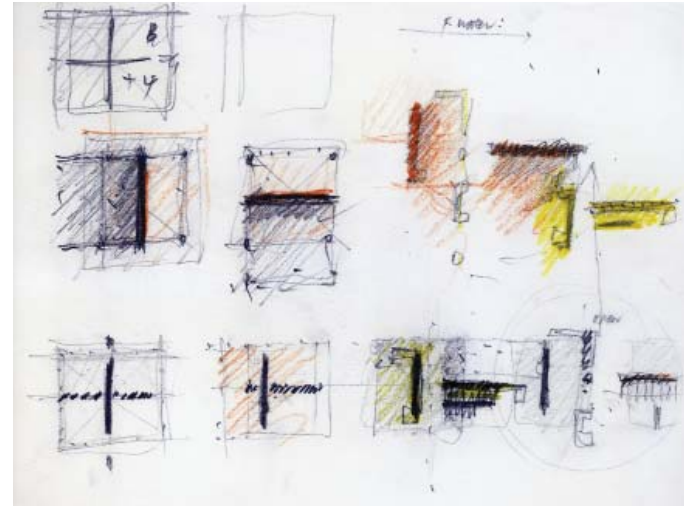
--from *Space & Society* 18

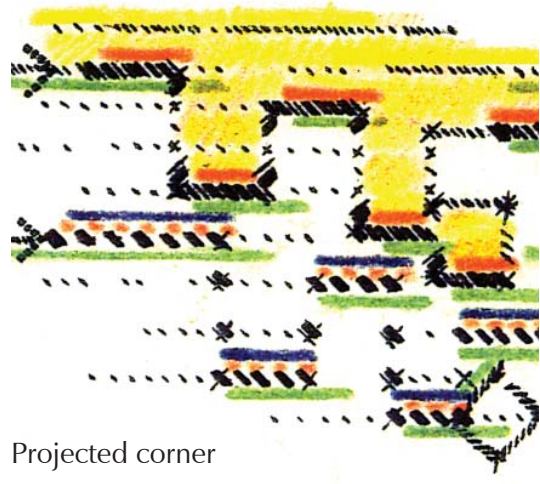




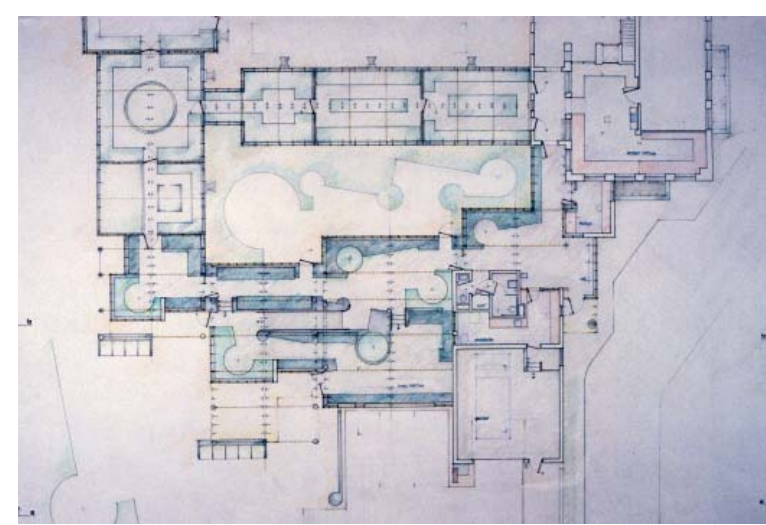
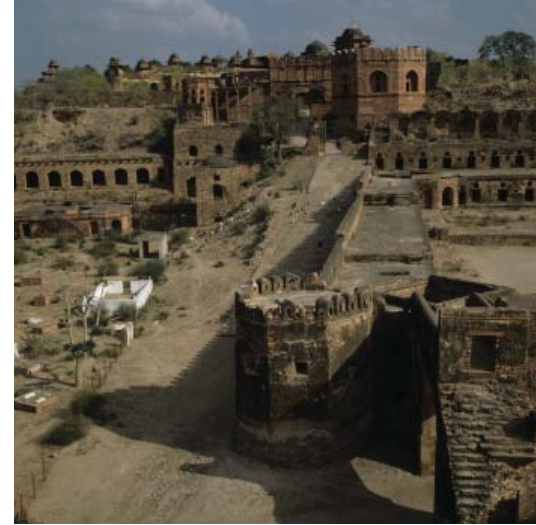
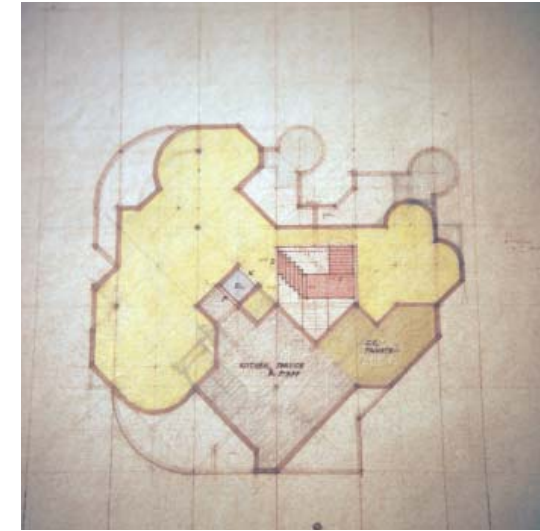
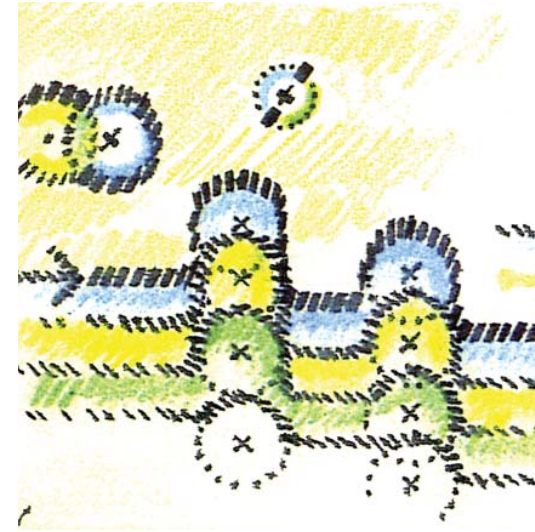
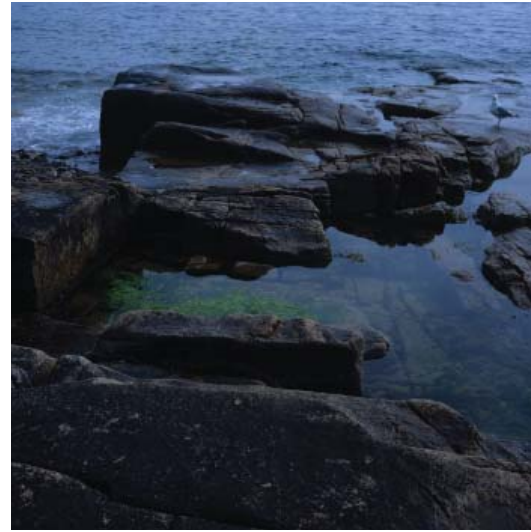


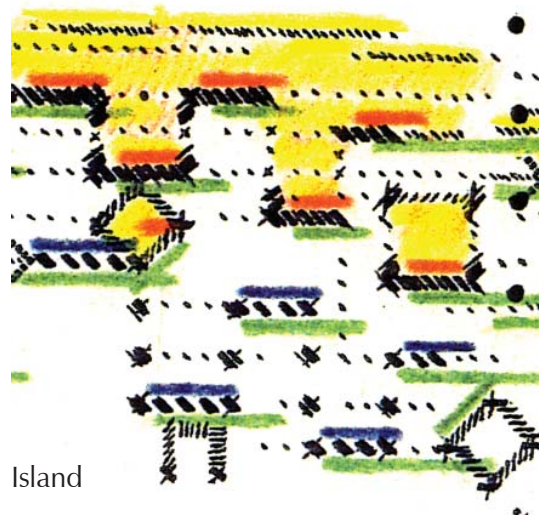
Bent Pi



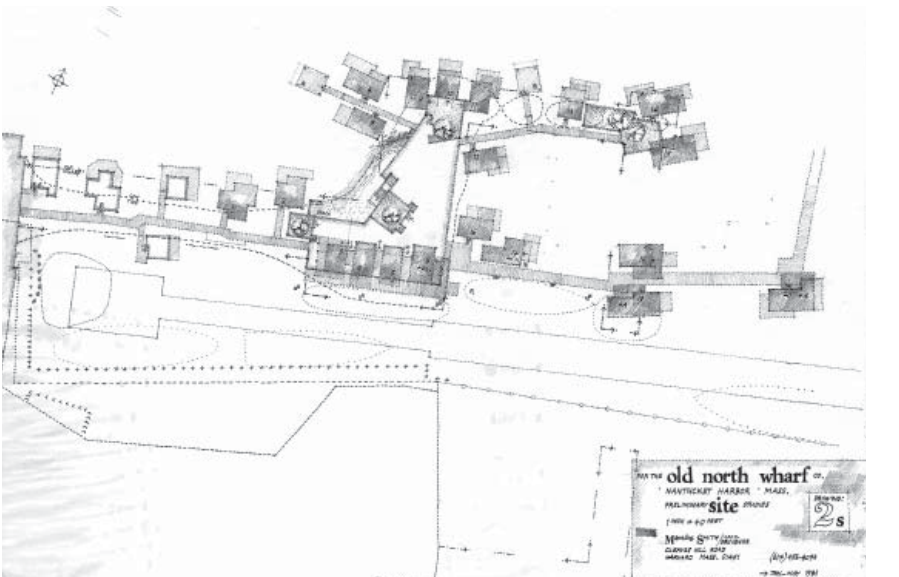
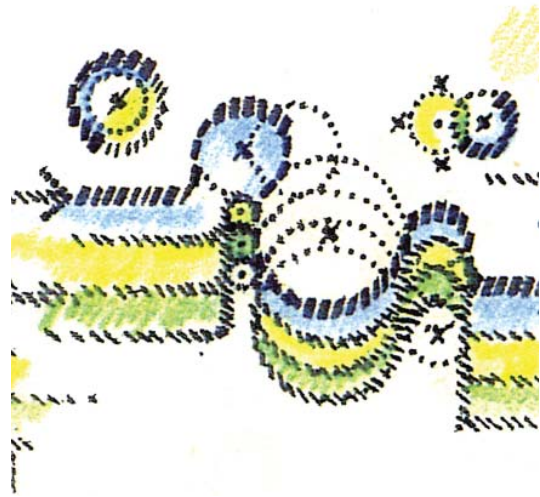
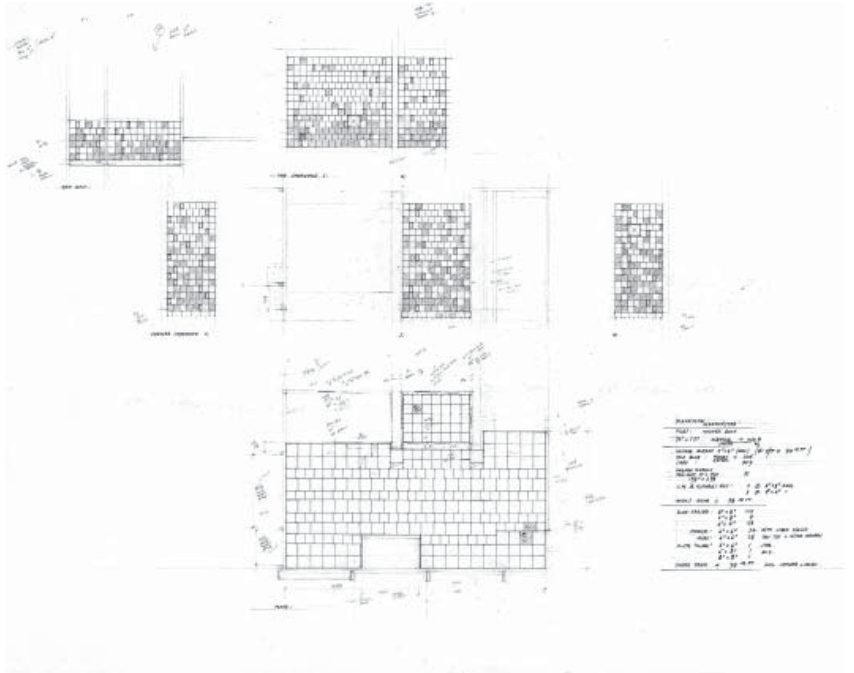
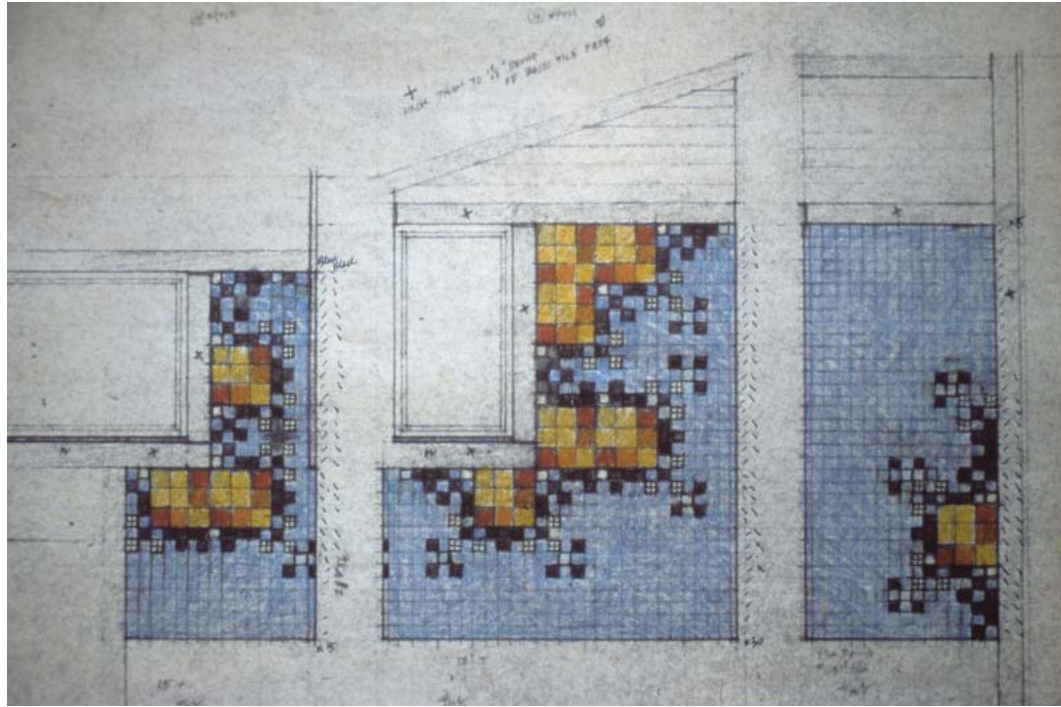


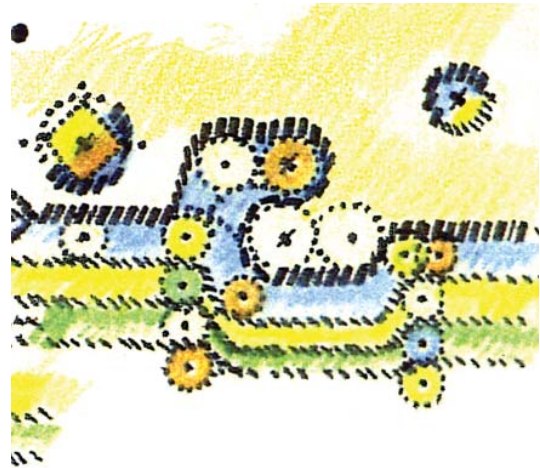
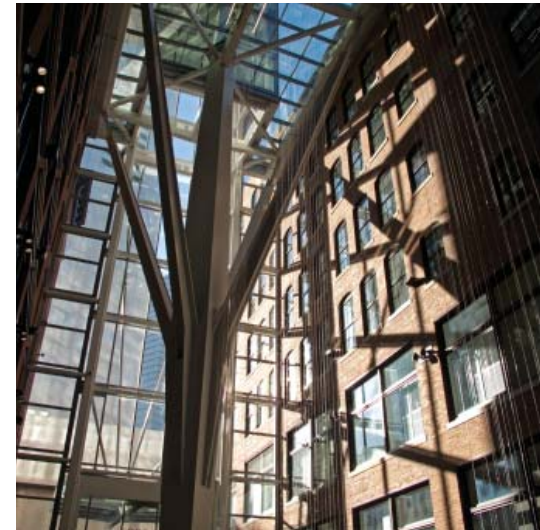
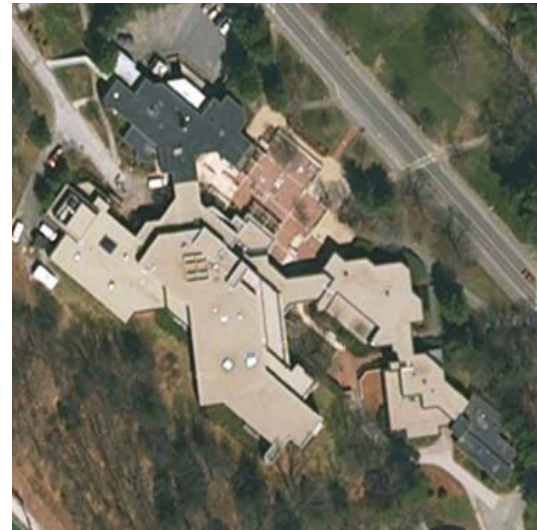
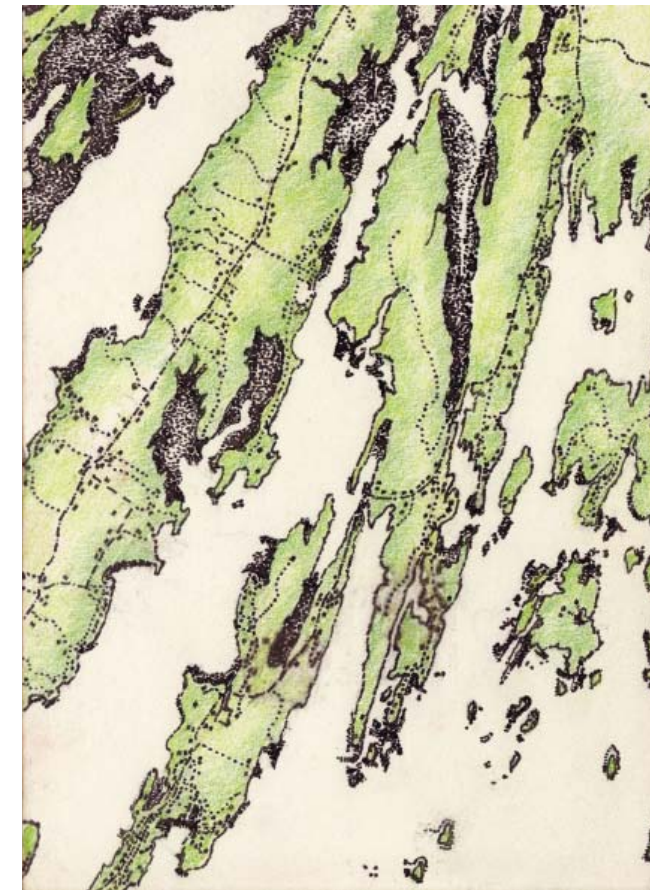
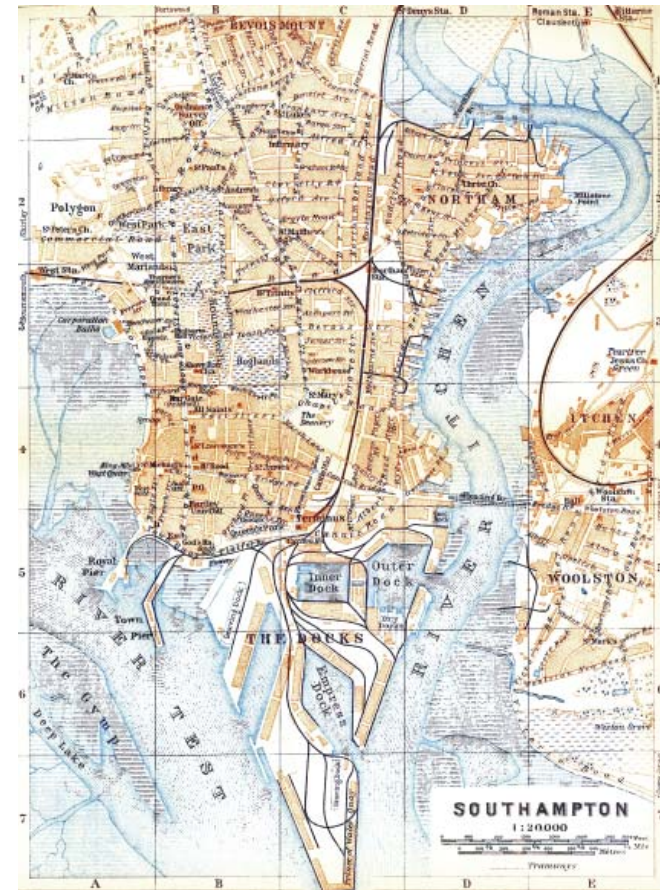
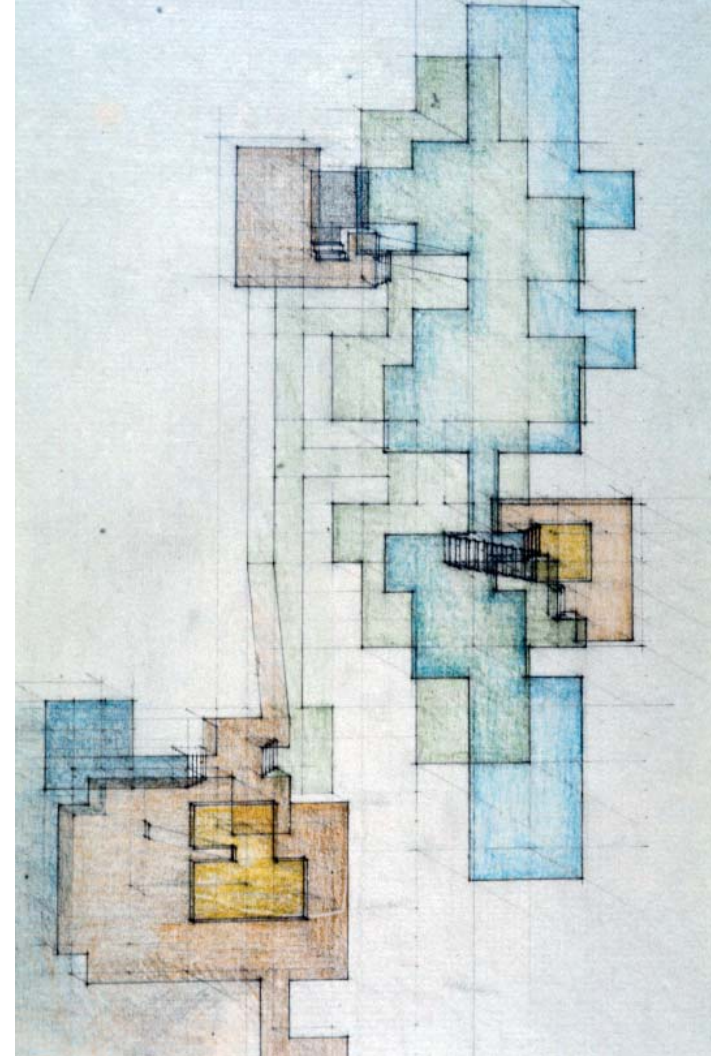
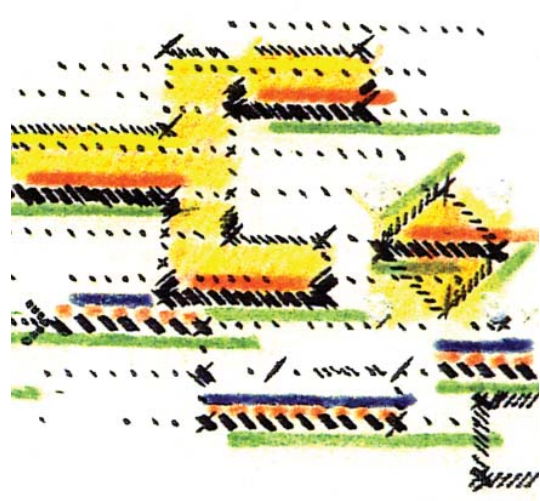
Projected corner





Island







space/light = structure [,] introduces "built" alternation(s) v. "spacings" / in between (Van Eyck)  
 morphological continuity (add something / no nothing !)

or reverse direction

see: geography shell etc. to scales/fish + shingling (?)

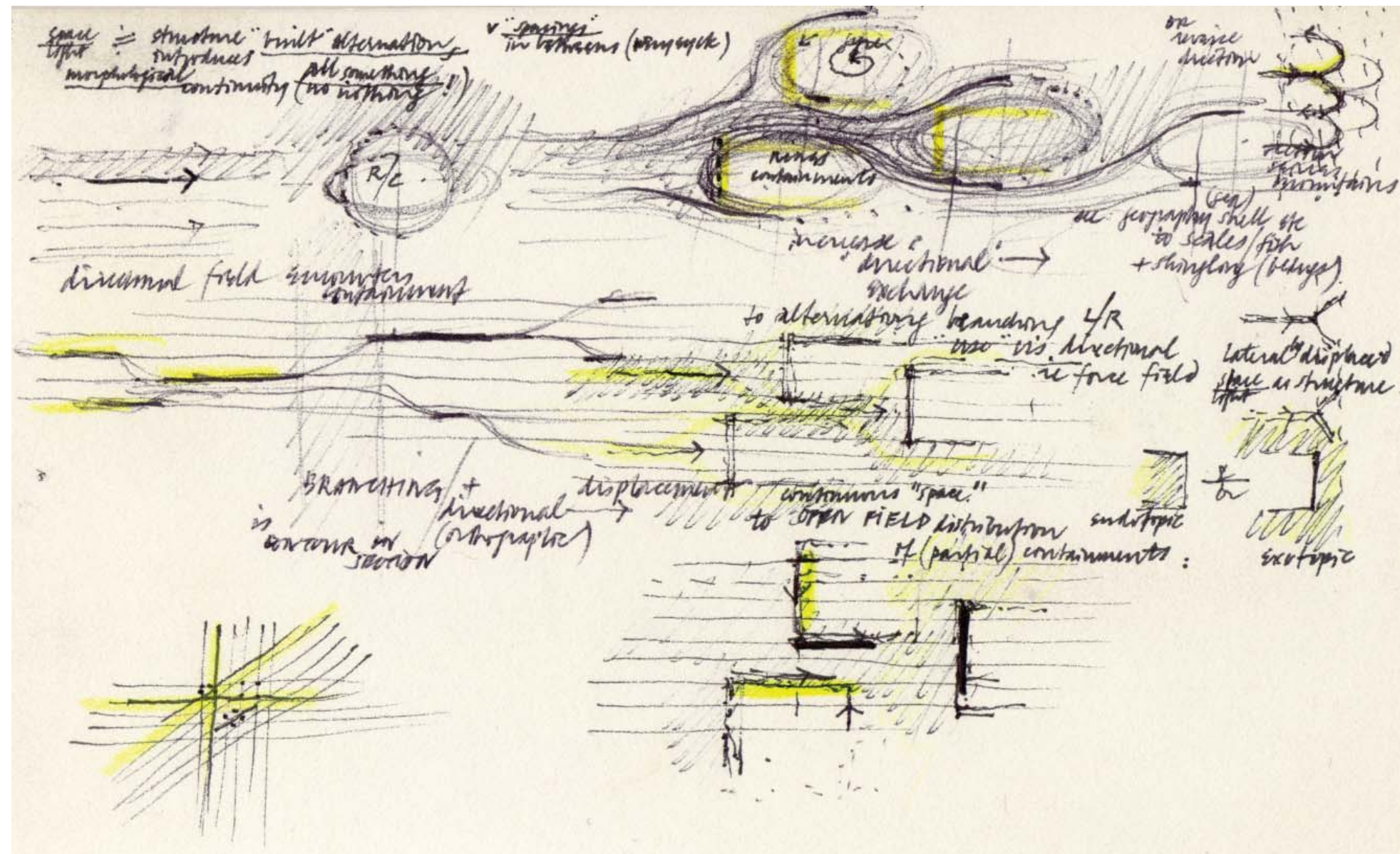
directional field encounters containment

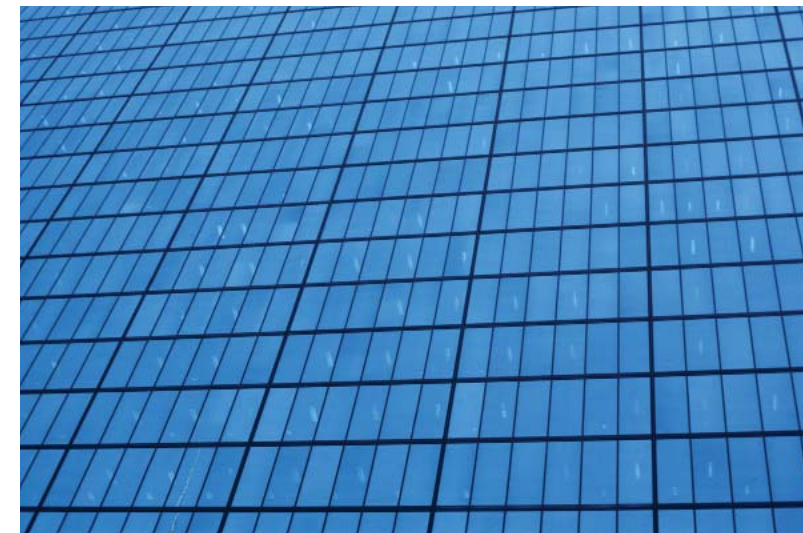
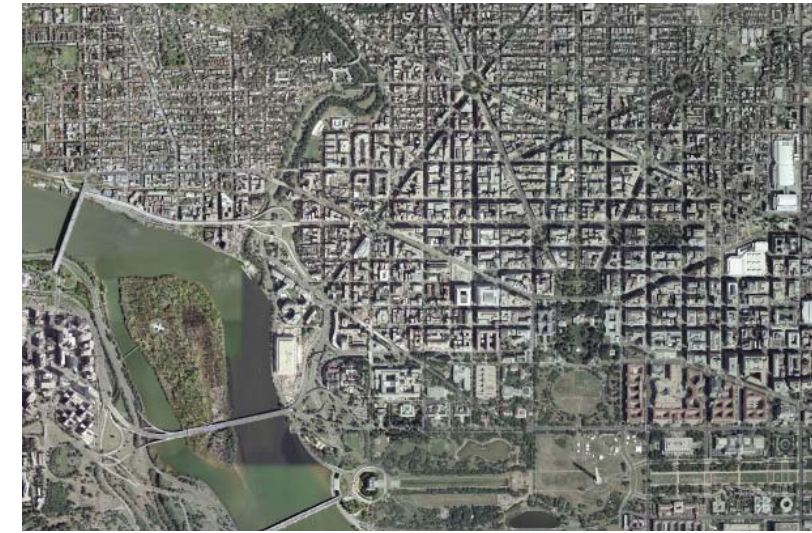
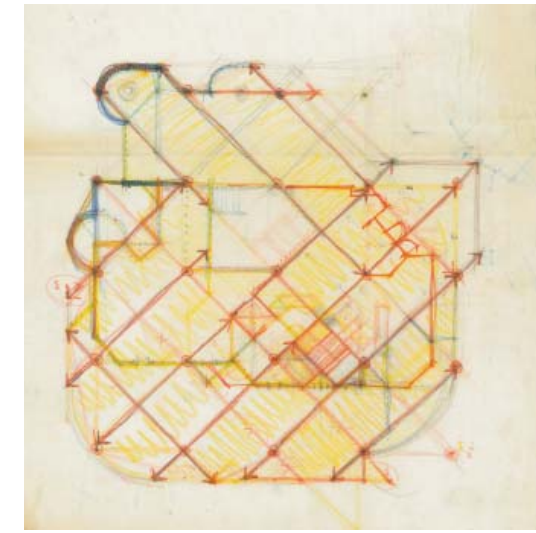
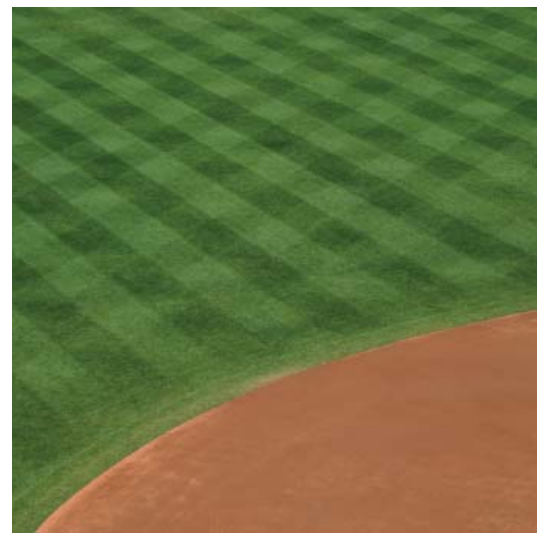
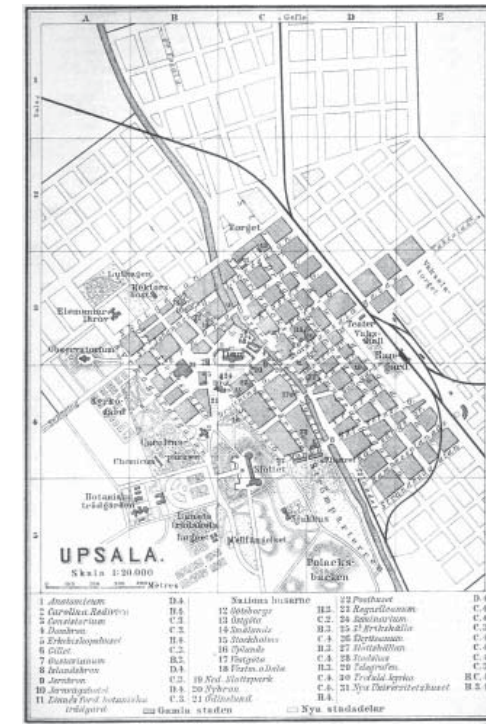
increase "directional" exchange  
 to alternating boundary left/right  
 "use" vis. directional  
 re force field

laterally displaced

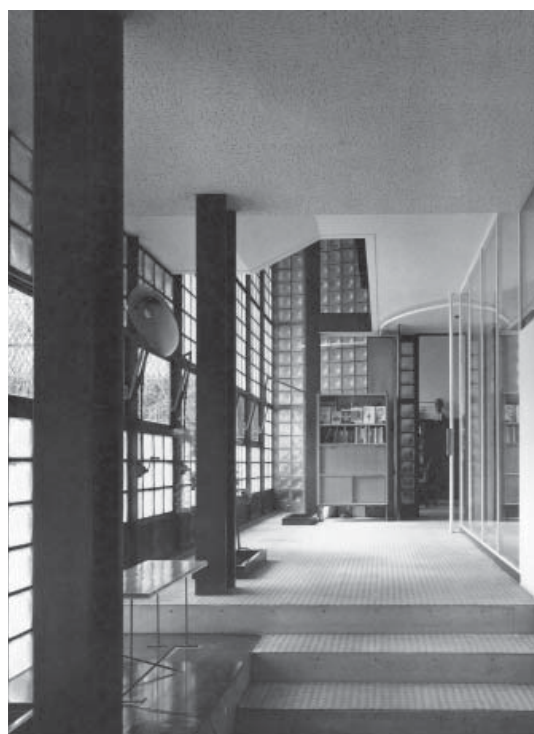
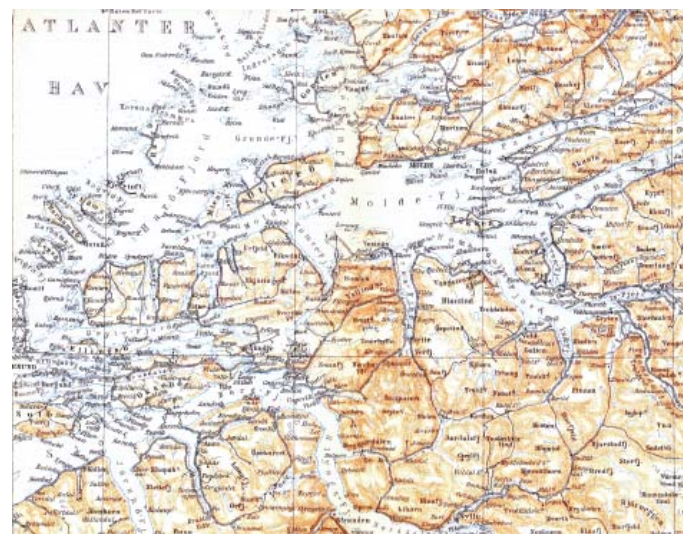
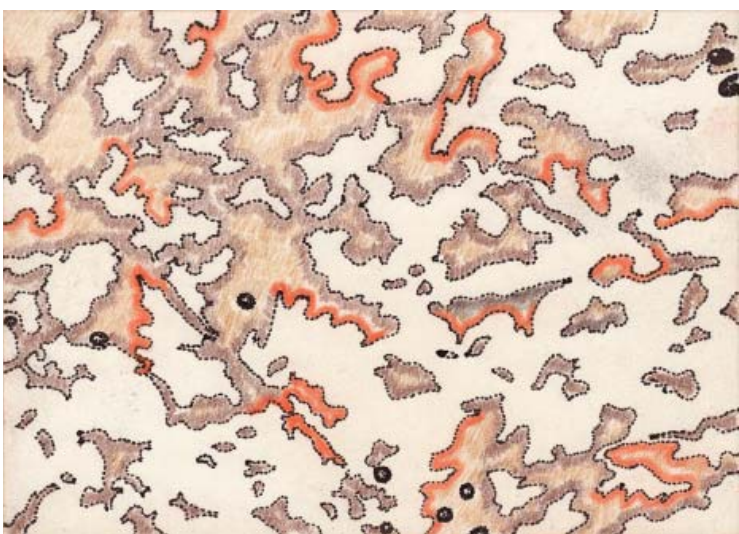
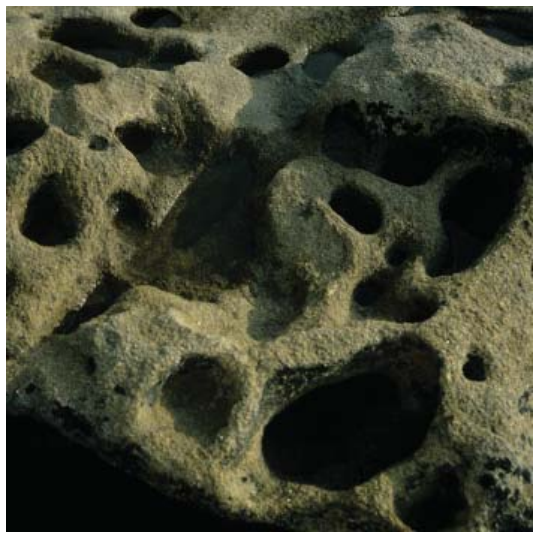
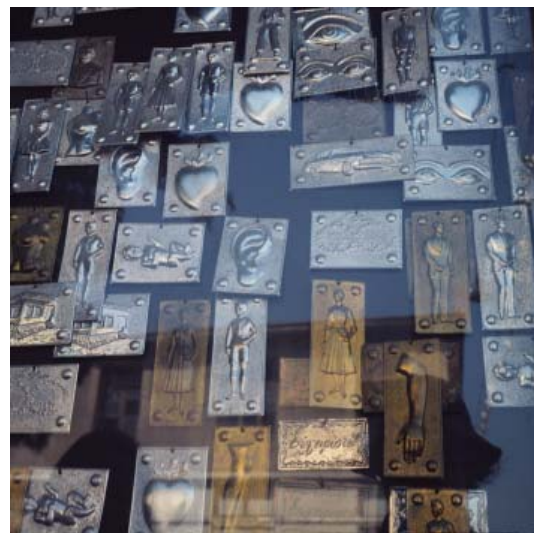
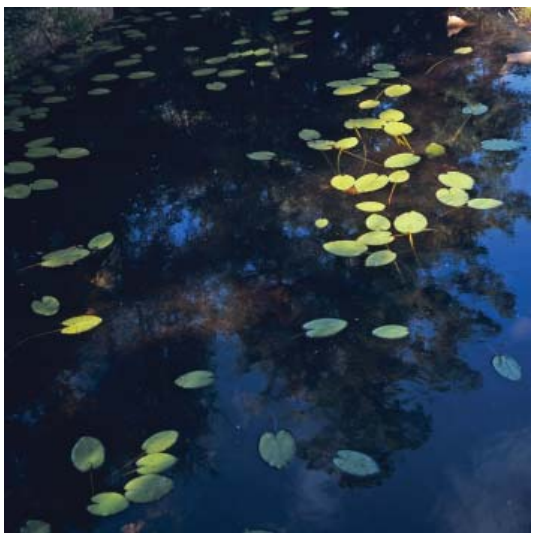
space/light as structure

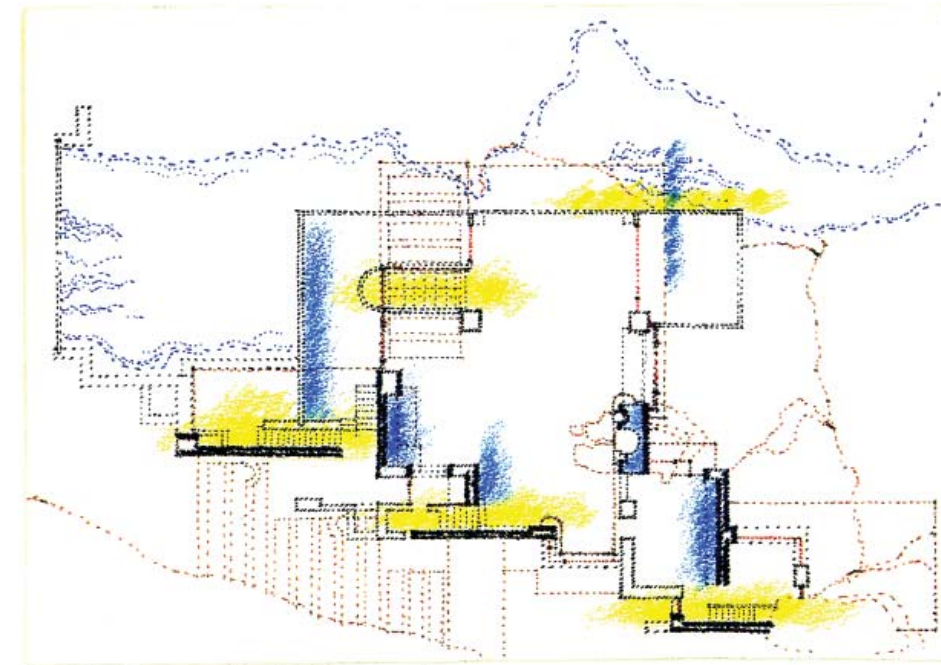
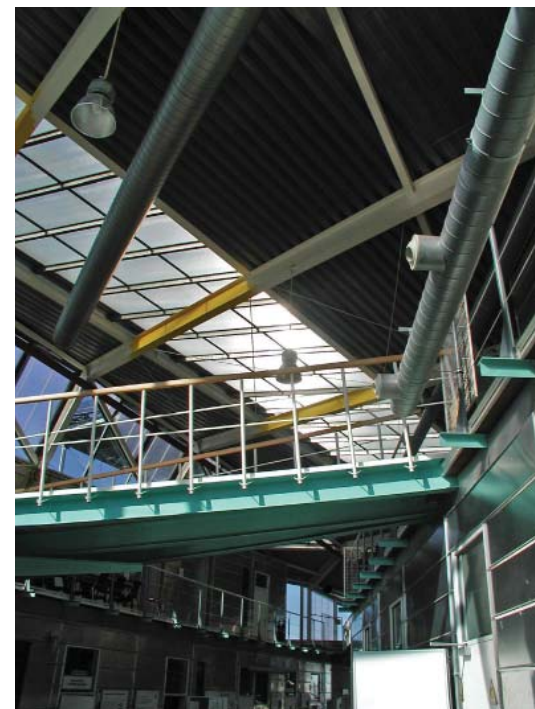
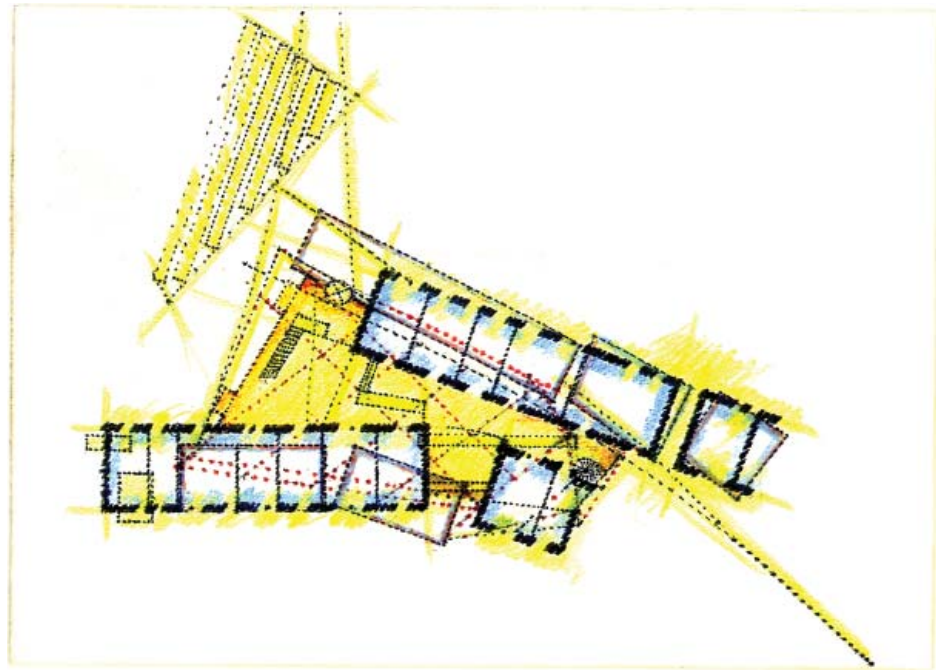
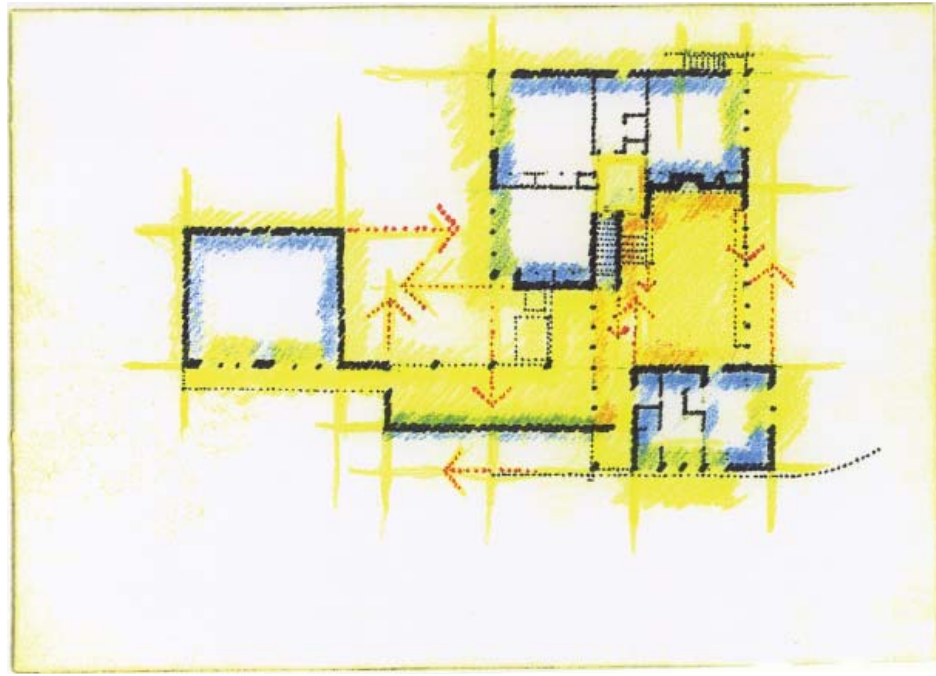
Branching + directional (orthographic) displacement is contour in section  
 continuous "space" to OPEN FIELD distribution of (partial) containments  
 endotopic vx. exotopic













Given the need for easy continuities / public movement (GO) and for containments / relative privacies (STOP), this beach offers, in analog, alternative means to both cellular subdivision (by plans of control) and cellular addition to disposed access.

Varying privacies / rocks are field-deployed so that easy ongoing public terrain / sand has great variation from narrow to wide, closed to open.

Material and form: differences of physical definition are maximized (ongoing sand vs. surface-tension rocks) while use is never singular (e.g., "rocks" may be public or private). At a larger size, the "rocks" could be the urban built form, the "sand" the unbuilt landscape.

--Space & Society 18

